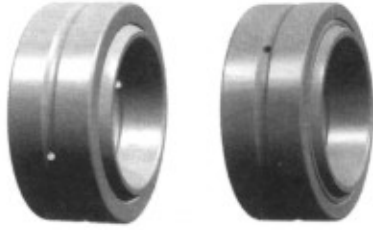
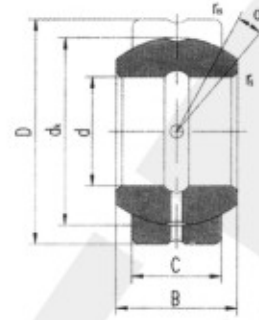


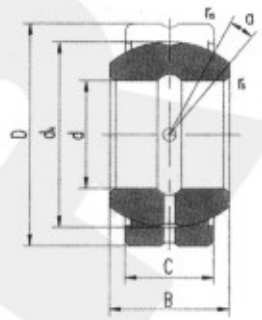
MAFSAL RULMANLAR GEZ



Sliding contact surfaces: Steel / Steel



GEZ...ES



GEZ...ES-2RS

Bearing number	Dimensions mm/inch								Load ratings kN		Weight ≈kg
	d	D	B	C	dk	rs min	rls min	$\alpha^\circ \approx$	Dynamic	Static	
GEZ12ES	12.700	22.225	11.100	9.525	18	0.15	0.6	6	13	41	0.022
	0.5	0.875	0.437	0.375	0.707	0.006	0.024				
GEZ15ES	15.875	26.988	13.894	11.913	23	0.15	0.6	6	22	65	0.036
	0.625	1.0625	0.547	0.469	0.904	0.006	0.024				
GEZ19ES	19.050	31.750	16.662	14.275	27.5	0.3	0.6	6	31	95	0.053
	0.75	1.25	0.656	0.562	1.081	0.012	0.024				
GEZ22ES	22.225	36.513	19.431	16.662	32	0.3	0.6	6	42	127	0.085
	0.875	1.4375	0.756	0.656	1.258	0.012	0.024				
GEZ25ES	25.400	41.275	22.225	19.050	36.5	0.3	0.6	6	56	166	0.121
	1	1.625	0.875	0.75	1.437	0.012	0.024				
GEZ31ES	31.750	50.800	27.762	23.800	45.5	0.6	0.6	6	86	260	0.23
	1.25	2	1.093	0.937	1.788	0.024	0.024				
GEZ34ES	34.925	55.563	30.150	26.187	49	0.6	1	6	102	310	0.35
	1.375	2.1875	1.187	1.031	1.926	0.024	0.04				
GEZ38ES	38.100	61.913	33.325	28.575	54.7	0.6	1	6	125	375	0.42
	1.5	2.4375	1.312	1.125	2.154	0.024	0.04				
GEZ44ES	44.450	71.438	38.887	33.325	63.9	0.6	1	6	170	510	0.64
	1.75	2.8125	1.531	1.312	2.511	0.024	0.04				
GEZ50ES	50.800	80.963	44.450	38.100	73	0.6	1	6	224	670	0.93
	2	3.1875	1.75	1.5	2.869	0.024	0.04				
GEZ57ES	57.150	90.488	50.013	42.850	82	0.6	1	6	280	850	1.3
	2.25	3.5625	1.969	1.687	3.223	0.024	0.04				
GEZ63ES	63.500	100.013	55.550	47.625	92	1	1	6	355	1060	1.85
	2.5	3.9375	2.187	1.875	3.616	0.04	0.04				
GEZ69ES	69.850	111.125	61.112	52.375	100	1	1	6	415	1250	2.4
	2.75	4.375	2.406	2.062	3.937	0.04	0.04				
GEZ76ES	76.200	120.650	66.675	57.150	109.5	1	1	6	500	1500	3.1
	3	4.75	2.625	2.25	4.303	0.04	0.04				
GEZ82ES	82.550	130.175	72.238	61.900	119	1	1	6	585	1760	3.8
	3.25	5.125	2.844	2.437	4.685	0.04	0.04				
GEZ88ES	88.900	139.700	77.775	66.675	128	1	1	6	680	2040	4.8
	3.5	5.5	3.062	2.625	5.04	0.04	0.04				