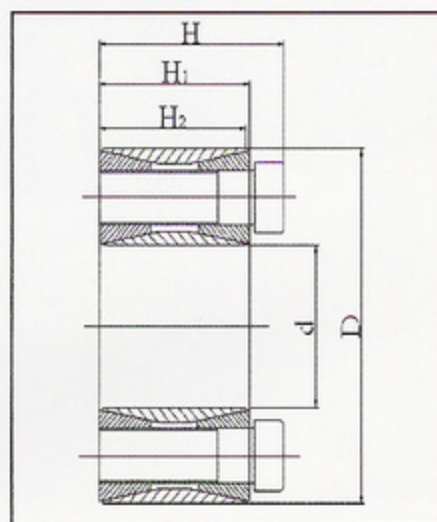
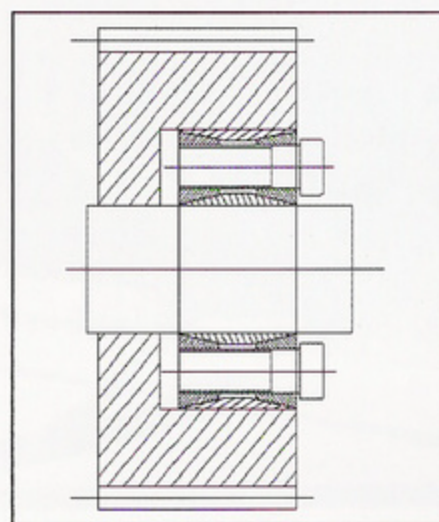


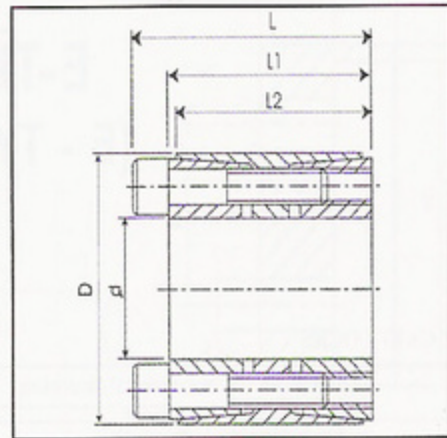
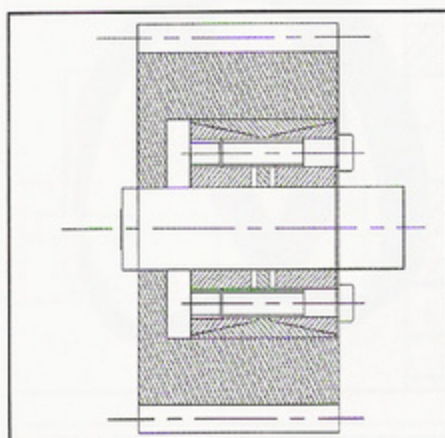
B-TIP (B - TYPE)



B CAPT-LOCK

Catalog dXD	fundamental dimensions			internal hexagon headed bolt		rated load		Pf N/mm ²	MA N.M	G kg
	H2	H1	H	SIZES	QTY	Ft kN	Mt KN.M			
KB19 X 47B	17	20	27.5	M6X18	8	26	0.27	210	14	0.2
KB20 X 47B	17	20	27.5	M6X18	8	27	0.27	210	14	0.24
KB22 X 47B	17	20	27.5	M6X18	8	27	0.30	195	14	0.23
KB25 X 50B	17	20	27.5	M6X18	9	30	0.38	190	14	0.25
KB28X55B	17	20	27.5	M6X18	10	33	0.47	185	14	0.30
KB30 X 55B	17	20	27.5	M6X18	10	33	0.50	175	14	0.29
KB35 X 60B	17	20	27.5	M6X18	12	40	0.70	180	14	0.32
KB38 X 63B	17	20	27.5	M6X18	14	46	0.88	185	14	0.33
KB40 X 65B	17	20	27.5	M6X18	14	46	0.92	180	14	0.34
KB42 X 72B	20	24	33.5	M8X22	12	65	1.36	200	35	0.48
KB45 X 75B	20	24	33.5	M8X22	12	72	1.62	210	35	0.57
KB50 X 80B	20	24	33.5	M8X22	12	71	1.77	190	35	0.60
KB55 X 85B	20	24	33.5	M8X22	14	83	2.27	200	35	0.63
KB60 X 90B	20	24	33.5	M8X22	14	83	2.47	180	35	0.69
KB65 X 95B	20	24	33.5	M8X22	16	93	3.04	190	35	0.73
KB70X110B	24	28	39.5	M10X25	14	132	4.60	210	70	1.26
KB75X115B	24	28	39.5	M10X25	14	131	4.90	195	70	1.33
KB80X120B	24	28	39.5	M10X25	14	131	5.20	180	70	1.40
KB85X125B	24	28	39.5	M10X25	16	148	6.30	195	70	1.49
KB90X130B	24	28	39.5	M10X25	16	147	6.30	180	70	1.53
KB95X135B	24	28	39.5	M10X25	18	167	7.90	195	70	1.62
KB100X145B	29	33	47.0	M12X30	14	192	9.60	195	125	2.01
KB105X150B	29	33	47.0	M12X30	14	190	9.98	185	125	2.10
KB110X155B	29	33	47.0	M12X30	14	191	10.50	180	125	2.15
KB120X165B	29	33	47.0	M12X30	16	218	13.10	185	125	2.35
KB125X170B	29	33	47.0	M12X30	18	220	13.78	180	125	2.95
KB130X180B	34	38	52	M12X35	20	272	17.60	165	125	3.51
KB140X190B	34	38	52	M12X35	22	298	20.90	165	125	3.85
KB150X200B	34	38	52	M12X35	24	324	24.20	170	125	4.07
KB160X210B	34	38	52	M12X35	26	350	28.0	170	125	4.30
KB170X225B	38	44	60	M14X40	22	386	32.90	160	190	5.78
KB180X235B	38	44	60	M14X40	24	420	37.80	165	190	6.05
KB190 X 250B	46	52	68	M14X45	28	490	46.50	150	190	8.25
KB200 X 260B	46	52	68	M14X45	30	525	52.50	150	190	8.65
KB210X275B	50	56	74	M14X50	24	599	62.89	151	295	10.10

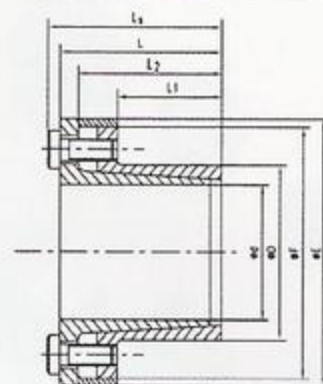
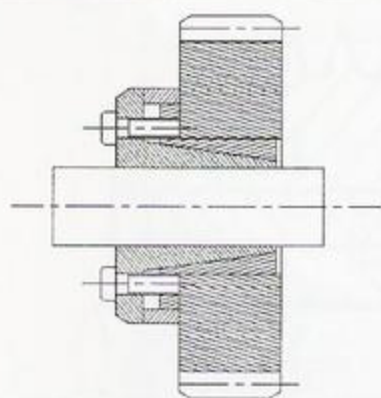
D-TIP (D - TYPE)



DE CAPT-LOCK

Catalog dXD	fundamental dimensions			Internal hexagon headed bolt		Rated load		Pf (N/mm ²)	MA (N.M)	(kg)
	L	L1	L2	SIZES	QTY	Ft kN	Mt Kn.M.			
KB25 X 50DE	46	40	32	M6X35	6	70	1.30	130	18	1.28
KB28X55DE	46	40	32	M6X35	6	70	1.45	120	18	1.35
KB30X55DE	46	40	32	M6X35	6	70	1.60	120	18	1.47
KB35X60DE	60	54	44	M6X50	7	80	1.78	90	18	1.55
KB38X65DE	62	54	44	M6X50	7	130	1.98	120	42	1.58
KB40X65DE	62	54	44	M8X50	7	130	2.15	140	42	1.68
KB42X75DE	62	54	44	M8X50	7	130	2.38	120	42	1.76
KB45X75DE	62	54	44	M8X50	7	130	2.65	120	42	1.85
KB4S X 80DE	62	54	44	M8X50	8	150	2.95	30	42	1.96
KB50 X 80DE	72	64	56	M8X60	8	150	3.26	110	42	2.04
KB55 X 85DE	72	64	56	M8X60	9	170	3.63	110	42	2.15
KB60X90DE	72	64	56	M8X60	10	180	4.03	120	42	2.25
KB65X95DE	72	64	56	M8X60	10	190	4.55	110	42	2.39
KB70X110DE	88	78	70	M10X70	10	310	5.10	130	85	2.48
KB75X115DE	88	78	70	M10X70	10	320	6.10	120	85	2.62
KB80X120DE	88	78	70	M10X70	12	340	6.55	130	85	2.76
KB85X125DE	88	78	70	M10X70	12	380	7.70	40	85	2.90
KB90X130DE	88	78	70	M10X70	12	380	8.10	130	85	3.04
KB95X135DE	88	78	70	M10X70	12	380	8.60	130	85	3.18
KB100X145DE	112	100	90	M12X90	12	510	9.10	120	145	5.44
KB110X155DE	112	100	90	M12X90	12	530	10.00	130	145	6.00
KB120X160DE	112	116	90	M12X90	14	650	13.10	140	145	6.88
KB130X180DE	130	116	104	M14X100	12	770	20.70	130	235	8.88
KB140X190DE	130	116	104	M14X100	14	870	22.30	140	235	9.44
KB150X200DE	130	116	104	M14X100	16	940	23.90	140	235	10.08
KB160X210DE	130	148	104	M14X100	16	1000	29.80	150	235	10.72
KB170X225DE	164	148	134	M16X130	14	1220	36.20	130	360	15.68
KB180X235DE	164	148	134	M16X130	16	1290	38.30	130	360	16.48
KB190X250DE	164	148	134	M16X130	16	1360	45.50	130	360	19.04
KB200X260DE	164	148	134	M16X130	16	1350	47.90	130	360	19.92
KB220X285DE	164	148	134	M16X130	18	1580	56.20	130	360	23.68

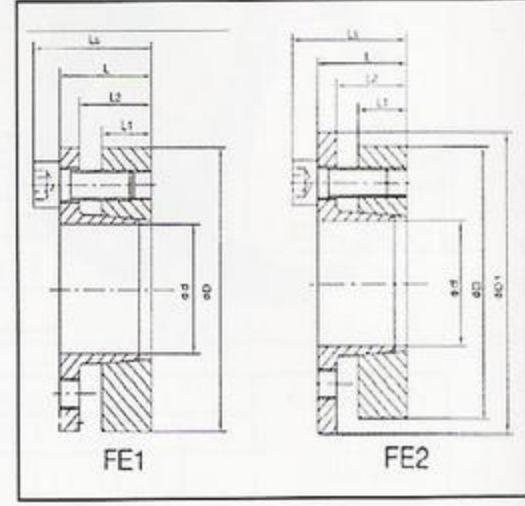
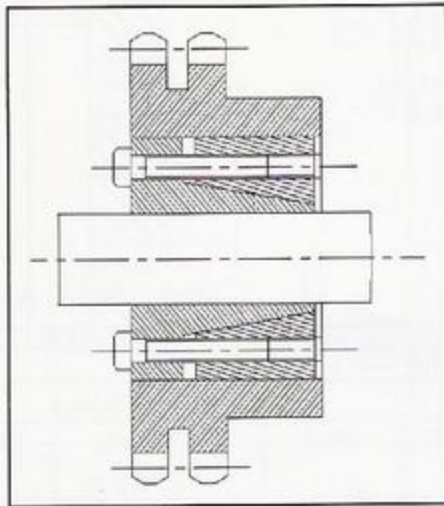
T-TIP
(T - TYPE)



T CAPT-LOCKS

Catalog dXD	Fundamental dimension						internal hexagon headed bolt		Rated load		Pf N/mm ²	MA N.M	G kg
	E	F	L2	LI	L	Ls	SIZES	QTY	Ft KN	Mt KN.M			
KB6X14T	25	23	18.5	10	21	24	M3X8	3	4.2	12	185	2.2	0.15
KB7X15T	27	24	22	12	25	29	M4X10	3	7.4	0.025	235	4.9	0.15
KB8X15T	27	24	22	12	25	29	M4X10	3	7.4	0.029	205	4.9	0.16
KB9X16T	28	25	23	14	26	30	M4X10	3	9.4	0.044	205	4.9	0.16
KB10X16T	28	25	23	14	26	30	M4X10	4	9.8	0.049	185	4.9	0.17
KB11X18T	32	28	23	14	26	30	M4X10	4	98	0.053	170	4.9	0.17
KB12X18T	32	28	23	14	26	30	M4X10	4	98	58	160	4.9	0.18
KB13X23T	38	33	23	14	26	30	M4X10	4	98	63	140	4.9	0.19
KB14X23T	38	33	23	14	26	30	M4X10	4	98	68	130	4.9	0.20
KB15X24T	45	40	29	16	36	42	M6X15	3	17	0.127	185	17	0.21
KB16X24T	45	40	29	16	36	42	M6X15	3	17	0.136	175	17	0.23
KB17X26T	47	42	31	18	38	44	M6X15	4	22	0.18	190	17	0.25
KB18X26T	47	42	31	18	38	44	M6X15	4	22	0.20	180	17	0.27
KB19X27T	49	43	31	18	38	44	M6X15	4	22	0.21	170	17	0.29
KB20X28T	50	44	31	18	38	44	M6X15	4	22	0.22	160	17	0.30
KB22X32T	54	48	38	25	45	51	M6X15	4	22	0.25	115	17	0.38
KB24X34T	56	50	38	25	45	51	M6X15	4	22	0.27	105	17	0.41
KB25X34T	56	50	38	25	45	51	M6X15	4	22	0.28	100	17	0.45
KB28X39T	61	55	38	25	45	51	M6X15	4	22	0.31	90	17	0.47
KB30X41T	62	57	38	25	45	51	M6X15	4	22	0.34	85	17	0.48
KB32X43T	65	59	38	25	45	51	M6X15	4	22	0.36	80	17	0.52
KB35X47T	69	62	45	32	52	58	M6X15	8	45	0.79	105	17	0.63
KB38X50T	72	66	45	32	52	58	M6X15	8	45	0.86	100	17	0.67
KB40X53T	75	69	45	32	52	58	M6X15	8	45	0.90	95	17	0.73
KB42X55T	78	71	45	32	52	58	M6X15	8	45	0.95	90	17	0.78
KB45X59T	86	80	62	45	70	78	M8X18	8	84	1.89	110	41	1.23
KB48X62T	87	81	62	45	70	78	M8X18	8	84	2.01	105	41	1.24
KB50X65T	92	86	62	45	70	78	M8X18	8	84	2.10	100	41	1.4
KB55X71T	98	92	72	55	80	88	M8X18	9	94	2.60	85	41	1.7
KB60X77T	104	98	72	55	80	88	M8X18	9	94	2.84	75	41	1.9
KB65X84T	111	105	72	55	80	88	M8X18	9	94	3.07	70	41	2.21
KB70X90T	119	113	86	65	96	106	M10X25	9	150	5.25	90	83	3.05
KB75X95T	126	119	86	65	96	106	M10X25	9	150	5.60	80	83	3.32
KB80X100T	131	125	86	65	96	106	M10X25	12	200	8.02	100	83	3.5
KB85X106T	137	131	86	65	96	106	M10X25	12	200	8.50	85	83	3.81
KB90XU2T	144	137	86	65	96	106	M10X25	12	200	9.0	90	83	4.2
KB95X120T	149	142	86	65	96	106	M10X25	12	230	11.0	100	83	4.75
KB100X125T	154	147	86	65	96	106	M10X25	12	300	15.0	120	83	5.46
KB110X140T	180	172	114	90	128	140	M12X30	12	290	16.0	80	145	6.05
KB120X155T	198	187	114	90	128	140	M12X30	12	290	17.5	70	145	7.18
KB130X165T	208	197	144	90	128	140	M12X30	16	384	25.0	90	145	8.03

F-TIP (F - TYPE)



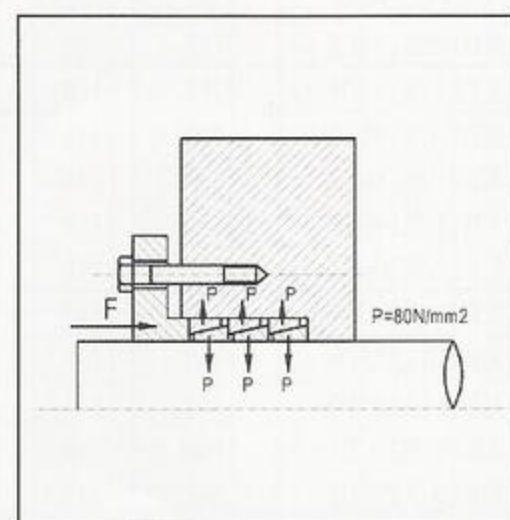
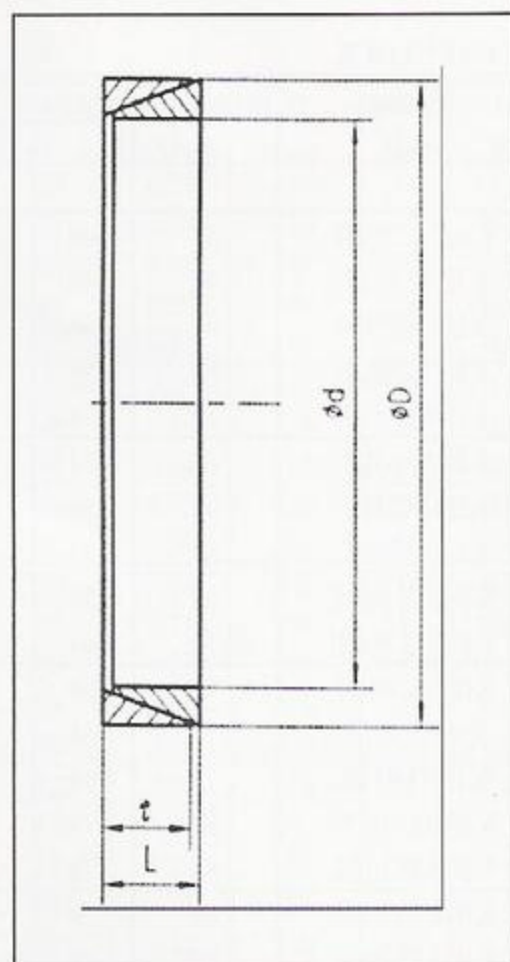
FA CAPT-LOCK

Catalog dXD	Fundamental dimensions					internal hexagon headed bolt		Rated load		Pf N/mm	MA N.M	G kg
	L1	L	L2	Ls	D1	SIZES	QTY	Ft KN	Mt KN.M			
KB18X47FA	17	28	22	34	56	M6X20	5	38.0	0.35	270	14	0.26
KB19X47FA	17	28	22	34	56	M6X20	5	38.0	0.37	280	14	0.27
KB20X47FA	17	28	22	34	56	M6X20	5	38.0	0.38	295	14	0.27
KB22X47FA	17	28	22	34	56	M6X20	5	38.0	0.41	245	14	0.28
KB24X50FA	17	28	22	34	59	M6X20	5	38.0	0.45	285	14	0.29
KB25X50FA	17	28	22	34	59	M6X20	6	45.6	0.57	255	14	0.29
KB28X55FA	17	28	22	34	64	M6X20	6	45.6	0.63	235	14	0.35
KB30X55FA	17	28	22	34	64	M6X20	6	45.6	0.66	295	14	0.36
KB32X60FA	17	28	22	34	69	M6X20	8	60.6	0.97	270	14	0.44
KB35X60FA	17	28	22	34	69	M6X20	8	60.6	1.06	250	14	0.47
KB38X65FA	17	28	22	34	74	M6X20	8	60.6	1.15	235	14	0.48
KB40X65FA	17	28	22	34	74	M6X20	8	60.6	1.21	300	14	0.55
KB42X75FA	20	33	25	41	84	M8X25	7	98.0	2.05	295	35	0.76
KB45X75FA	20	33	25	41	84	M8X25	7	98.0	2.20	270	35	0.78
KB48X80FA	20	33	25	41	89	M8X25	7	98.0	2.35	260	35	0.81
KB50X80FA	20	33	25	41	89	M8X25	7	98.0	2.45	270	35	0.87
KB55X85FA	20	33	25	41	94	M8X25	8	112.0	3.08	245	35	0.94
KB60X90FA	20	33	25	41	99	M8X25	8	112.0	3.36	255	35	1.0
KB63X95FA	20	33	25	41	104	M8X25	9	126.0	3.87	280	35	1.06
KB65X95FA	20	33	25	41	104	M8X25	9	126.0	4.09	250	35	1.70
KB70X110FA	24	40	30	50	119	M10X30	8	179.0	6.30	250	70	1.79
KB75X115FA	24	40	30	50	124	M10X30	8	179.0	6.70	260	70	1.89
KB80X120FA	24	40	30	50	129	M10X30	8	179.0	7.15	250	70	1.98
KB85X125FA	24	40	30	50	134	M10X30	9	200	8.50	260	70	2.15
KB90X130FA	24	40	30	50	139	M10X30	9	200	9.10	260	70	2.24
KB95 X 135FA	24	40	30	50	144	M10X30	10	224	10.6	260	70	3.07
KB100X145FA	26	44	32	56	154	M12X30	8	268	13.4	270	125	3.35
KB110X155FA	26	44	32	56	164	M12X30	8	268	14.6	240	125	3.59
KB120X165FA	26	44	32	56	174	M12X30	9	298	17.9	250	125	5.04
KB130X180FA	34	54	40	58	189	M12X30	12	400	26.0	240	125	5.33

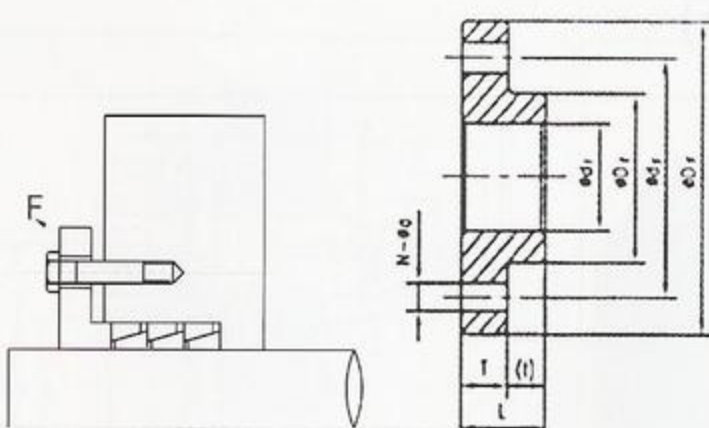
E-TIP (E - TYPE)

E CAPT LOCKS

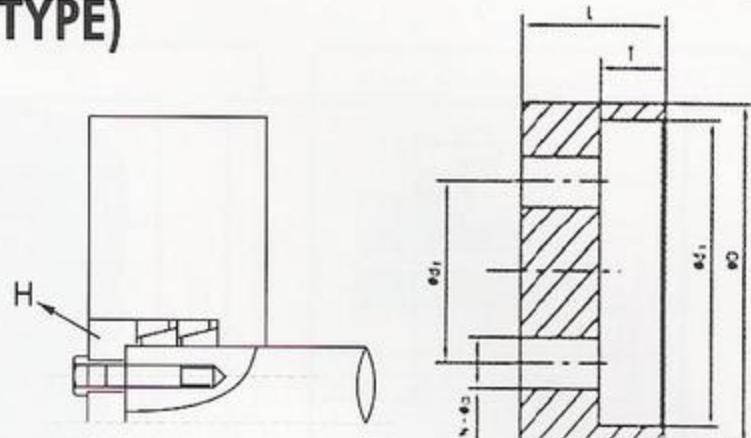
Catalog dXD	Fundamental dimensions		RATED LOAD Pf=100N/mm ²		G (kg)
	L	t	Ft(kN)	Mt (kN,M)	
SKBE10X13E	4.5	3.7	1.4	0.007	0.002
SKBE12X15E	4.5	3.7	1.67	0.01	0.002
SKBE13X16E	4.5	3.7	1.81	0.012	0.002
SKBE14X18E	6.3	5.3	2.8	0.02	0.005
SKBE15X19E	6.3	5.3	3.0	0.023	0.005
SKBE16X20E	6.3	5.3	3.2	0.026	0.006
SKBE17X21E	6.3	5.3	3.4	0.029	0.006
SKBE18X22E	6.3	5.3	3.6	0.033	0.008
SKBE19X24E	6.3	5.3	3.8	0.036	0.008
SKBE20 X 25E	6.3	5.3	4.0	0.4	0.01
SKBE22 X 26E	6.3	5.3	4.5	0.05	0.01
SKBE24 X 28E	6.3	5.3	4.8	0.058	0.01
SKBE25X30E	6.3	5.3	5.0	0.06	0.01
SKBE28X32E	6.3	5.3	5.6	0.078	0.01
SKBE30X35E	6.3	5.3	6.0	0.09	0.01
SKBE32X36E	6.3	5.3	6.4	0.102	0.015
SKBE35X40E	7.0	6.0	7.9	0.139	0.02
SKBE36X42E	7.0	6.0	8.1	0.147	0.02
SKBE38X44E	7.0	6.0	8.6	0.163	0.02
SKBE40 X 45E	8.0	6.6	9.9	0.20	0.025
SKBE42 X 48E	8.0	6.6	10.5	0.22	0.04
SKBE45X52E	10.0	8.6	14.6	0.33	0.043
SKBE48X55E	10.0	8.6	15.6	0.38	0.045
SKBE50X57E	10.0	8.6	16.2	0.40	0.05
SKBE55X62E	10.0	8.6	17.8	0.49	0.06
SKBE56X64E	12.0	10.4	22.0	0.62	0.074
SKBE60X68E	12.0	10.4	23.5	0.70	0.074
SKBE63X71E	12.0	10.4	25.5	0.83	0.08
SKBE65X73E	12.0	10.4	25.6	0.93	0.08
SKBE70 X 79E	14.0	12.2	32.0	1.12	0.11
SKBE71X80E	14.0	12.2	32.7	1.16	0.12
SKBE75X84E	14.0	12.2	34.4	1.29	0.12
SKBE80X91E	17.0	15.0	45.0	1.81	0.19
SKBE85X96E	17.0	15.0	48.0	2.04	0.20
SKBE90X101E	17.0	15.0	51.0	2.29	0.22
SKBE95X106E	17.0	15.0	54.0	2.55	0.23
SKBE100X114E	21.0	18.7	70.0	3.50	0.38
SKBE105X119E	21.0	18.7	73.2	3.82	0.40
SKBE110X124E	21.0	18.7	77.0	4.25	0.41
SKBE120X134E	21.0	18.7	84.0	5.05	0.45
SKBE125X139E	21.0	18.7	92.0	5.75	0.62
SKBE130X148E	28.0	25.3	124.0	8.05	0.85
SKBE140X158E	28.0	25.3	134.0	9.35	0.91
SKBE150X168E	28.0	25.3	143.0	10.70	0.97
SKBE160X178E	28.0	25.3	152.5	12.20	1.02
SKBE170X191E	33.0	30.0	192.0 204.0	16.30	1.50
SKBE180X201E	33.0	30.0		18.30	1.58



"F" Tip Flanş



E-TİP (E - TYPE)



"H" Tip Flanş

Catalog dXD	Internal hexagon headed bolt				
	dF	SIZES	N	Ms(kgf. m)	E(kgf)
SKBE10X13F SKBE12X15F SKBE13X16F	28	M4X18	3	0.39	1680
SKBE14X18F SKBE15X19F SKBE16X20F SKBE17X21F SKBE18X22F	35	M5X20		0.77	2700
SKBE19X24F SKBE20X25F SKBE22X26F	35	M5X20		0.77	3600
SKBE24X28F SKBE25X30F SKBE28X32F	40	M5X20	4	0.77	3600
SKBE30X35F SKBE32X36F	50	M5X20	5	0.77	4500
SKBE35X40F SKBE36X42F SKBE38X44F	58	M5X20	6	0.77	5400
SKBE40X45F SKBE42X48F	62	M6X25		1.3	7620
SKBE45X52F SKBE48X55F SKBE50X57F	70	M6X25	8	1.3	10160
SKBE55X62F	78	M6X25	10	1.3	12700
SKBE56X64F	86	MSX35	8	3.2	18400
SKBE60X68F SKBE63X71F	92	MSX35			
SKBE65X73F	98				
SKBE70X79F SKBE71X80F	98	MSX35	10	3.2	23000
SKBE75X84F	104				
SKBE80X91F	110	M10X40	8	6.3	29600
SKBE85X96F	116				
SKBE90X101F	120	M10X40	9	6.3	33300
SKBE95X106F	126				
SKBE100X114F	134	M10X40		6.3	37000
SKBE105X119F	141				
SKBE110X124F	146	M12X50		12	75600
SKBE120X134F	156				

Catalog dXD	Internal hexagon headed bolt				
	dF	SIZES	N	Ms (kgf. m)	E(kgf)
SKBE10X13H SKBE12X15H SKBE13X16H		M8X30	1	3.2	2300
SKBE14X18H SKBE15X19H SKBE16X20H SKBE17X21H SKBE18X22H		M10X35		6.3	3700
SKBE19X24H SKBE20X25H SKBE22X26H		M12X40		12	4560
SKBE24X28H	11	M5X20	3	0.77	2700
SKBE25X30H	12				
SKBE28X32H	14	M6X25		1.3	3810
SKBE30X35H SKBE32X36H	16				
SKBE35X40H	19	M6X25	4	1.3	5080
SKBE36X42H	20				
SKBE38X44H	22				
SKBE40X45H	24	M6X25	6	1.3	7620
SKBE42X48H	26				
SKBE45X52H	29	M6X25	S	1.3	10160
SKBE48X55H	32				
SKBE50X57H	34				
SKBE55X62H	36				
SKBE56X64H	38	M8X35	6	3.2	13800
SKBE60X68H	42				
SKBE63X71H	45	M8X35	8	3.2	18400
SKBE65X73H	47				
SKBE70X79H	50	M10X40	6	6.3	22200
SKBE71X80H	51				
SKBE75X84H	55				
SKBE80X91H	60	M10X40	8	6.3	29600
SKBE85X96H	65				
SKBE90X101H	70	M10X40	10	6.3	37000
SKBE95X106H	75				
SKBE100X114H	80	M10X40	12	6.3	44400
SKBE105X119H	85				

Note: Tap hole will be in the center of the tightening flange when "v"/n=1